

# Native American Horoscope

Copyright ©1997-2004 PEGASTAR AG - The Personal Book  
Company · All rights strictly reserved, worldwide.  
Text: Libor Schaffer  
Programming / type-setting: Ulrich Werner  
v2.341/2.3220, License: 66  
Abendschön Consulting  
HeikoAbendschön  
An der Vogelhardt 1  
76149 Karlsruhe





## General Explanations

*Within numerous tribes and cultures of far reaching branches of America's native peoples, the Indians had, in spite of all the differences due to their history, their surroundings, the conditions influencing their existence, their material cultural heritage, their social environment and their religious concepts, one significant and substantial thing in common, as proved by countless examples.*

*We can gather from many very old yet reliable traditional sources, Heinrich, that the Indians didn't see the individual person as separate and divided from their individual environment. According to their point of view, which hasn't lost any of its validity and power of perception, even in the present day, every person builds a rather intimate and invisible whole with the nature surrounding him.*

*An individual's true self, his real power and possibilities, his character traits, his abilities and last but not least his responsibility, can only be revealed and laid bare, according to Indian*





*interpretations on the fundamental condition that we come to the realization of the higher interaction between mankind and nature.*

*Accordingly Indian astrology assigns every individual person to a certain animal (snowgoose, otter, puma, hawk, beaver, deer, woodpecker, sturgeon, brown bear, raven, snake, elk), a certain plant (birch, aspen, plantain, dandelion, blue camass plant, yarrow, dog-rose, raspberry, violet, mullein, thistle, black spruce) and a certain mineral (quartz, silver, turquoise, opal, chrysocolla, moss agate, carnel, granite, amethyst, red jasper, copper, obsidian).*

*However, the transcending and all encompassing perspective of the Native American horoscope goes one important step further: namely, it also takes the four cardinal points of the compass and the four basic elements (earth, water, air, fire) into consideration in its analysis.*

*In order to better understand and integrate the Indian way of thinking with its characteristic conceptions, we have to be clear on one point: in their mind, all of human existence moves in a circle which moves from birth to death to rebirth.*

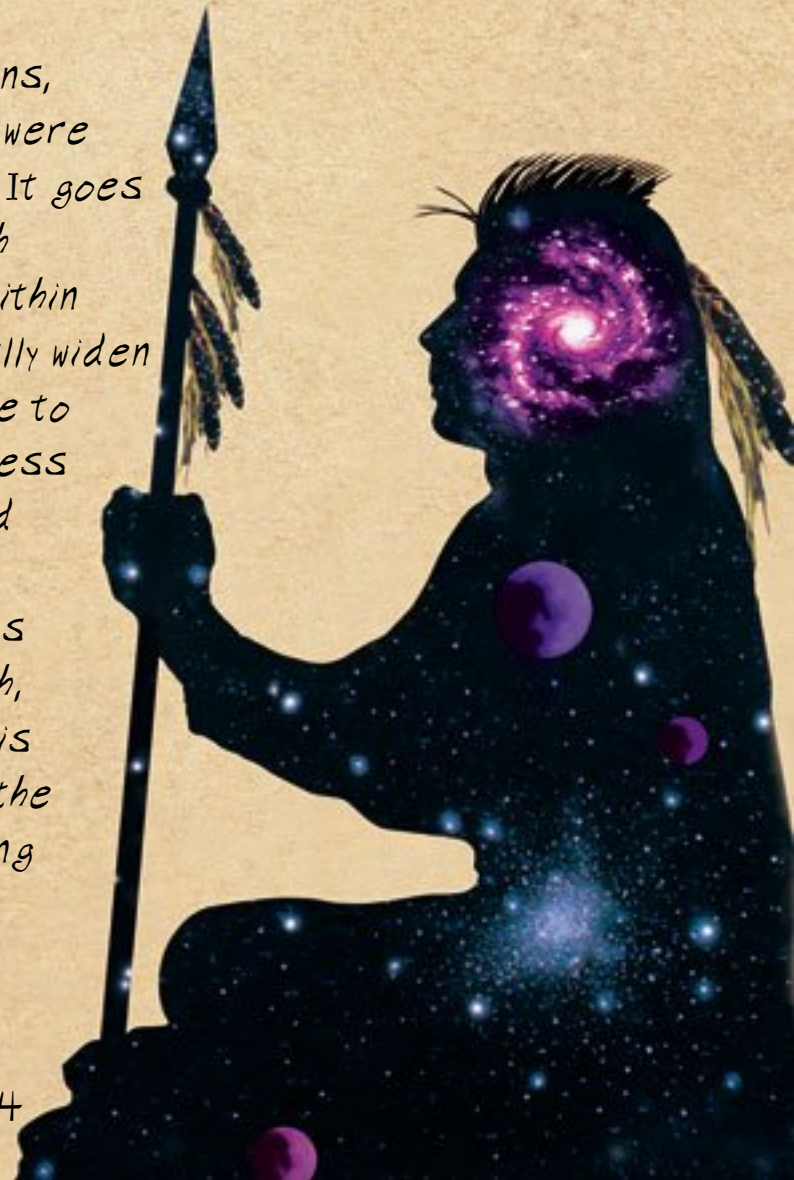




*This circle, which fundamentally determines their outlook on things, had great importance even in everyday life - as demonstrated by numerous examples. In many various rites, customs and ceremonies, the magical circle played just as large a role as the meetings, councils and festivities. Moreover, different Indian tribes often lay their lodgings in the form of a circle.*

*According to Indian perspective, the date of birth of a person decides the exact point upon which that individual in question enters the circle. The corresponding phase can be assigned in direct relationship to the twelve moons - the spectrum reaches from the moon of earth's renewal to the moon of the long snow.*

*In this context, restrictions, boundaries and stagnation were unknown to Indian astrology. It goes on the assumption that each person has the possibility within his/her lifetime to continually widen his/her horizon and advance to higher levels of consciousness through new perceptions and insights. In respect to the described circle, this means that at a certain point, birth, each human being enters this circle. Mind you, this is only the individual's personal starting*





point, for now he has been given the marvelous opportunity to move within the circle, to traverse it, as it were.

In the Indian way of thinking, therefore, it would be improper to persist at your starting point, tantamount to rigidity, inflexibility and inertia. Instead, man has the task during his lifetime to get to know and explore different moons, animals, plants, minerals and elements.

Only by doing justice to his true destiny, and broadening and deepening his knowledge, will he live a happy, contented and fulfilled life in harmony with nature and with his natural endowment.





## Summary

Name: Heinrich Muster  
Birthdate: 03/03/2008

Moon:

The Moon of the Great Winds

Animal Totem: The Puma

Plant Totem: The Plantain

Mineral Totem: The Turquoise

Favorable relationships:

Woodpecker, Snake, Brown Bear, Beaver and  
Snow Goose

Cardinal Point:

Waboose - The Northern  
Force

Element Clan:

The Frog





# The Moon of the Great Winds

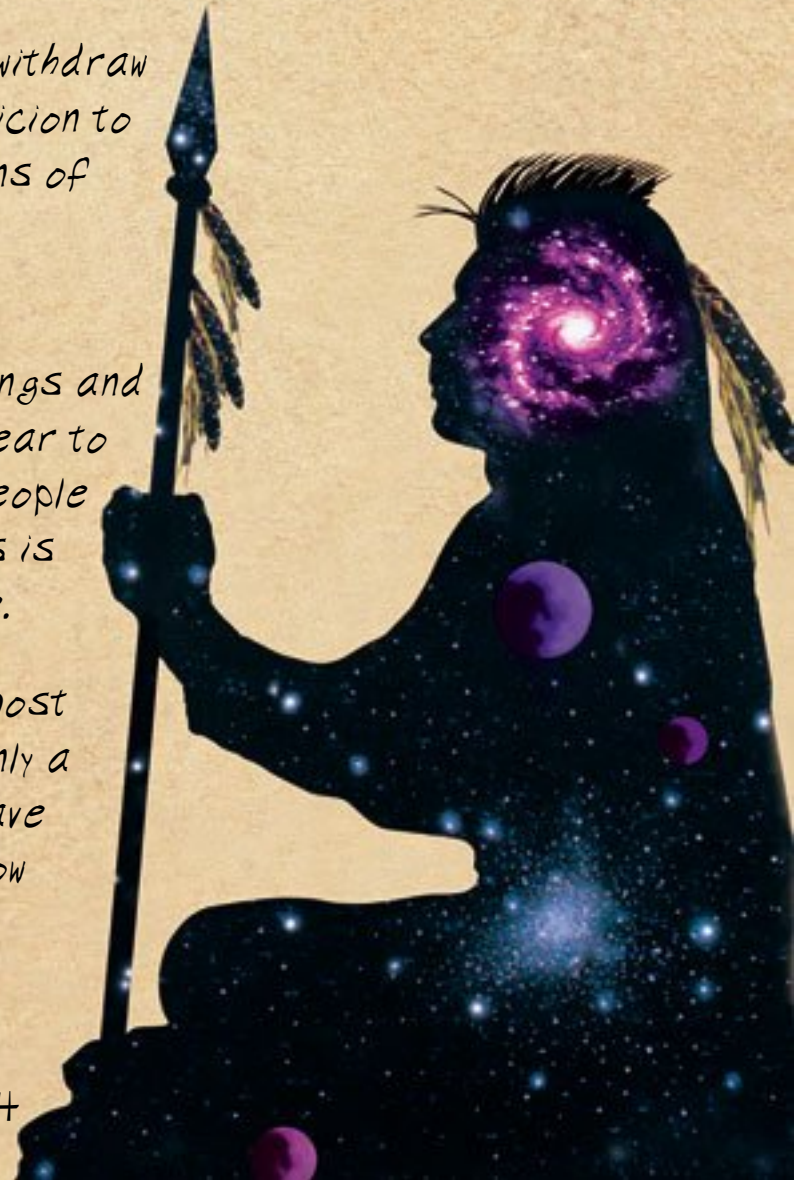
## Your Animal Totem: The Puma

Your animal totem indicates that you, like the puma, are concerned about having a clearly marked out and delineated territory to call your own. Heinrich, you find the support and security which you need as a sensitive person, who has the ability to feel things deeply in this secure environment.

In addition, you pay the utmost attention to anyone who is preparing to encroach upon your territory. If someone should behave too impetuously and rapidly you withdraw and observe them with suspicion to determine what the intentions of the intruder are.

You basically don't like to discuss your deepest feelings and sensitivities. You try to appear to be open and informal but people are quick to sense that this is just an outward appearance.

By comparison your innermost feelings are sacred and only a few people will therefore have the opportunity to get to know





*your true attitude and philosophy of life.*

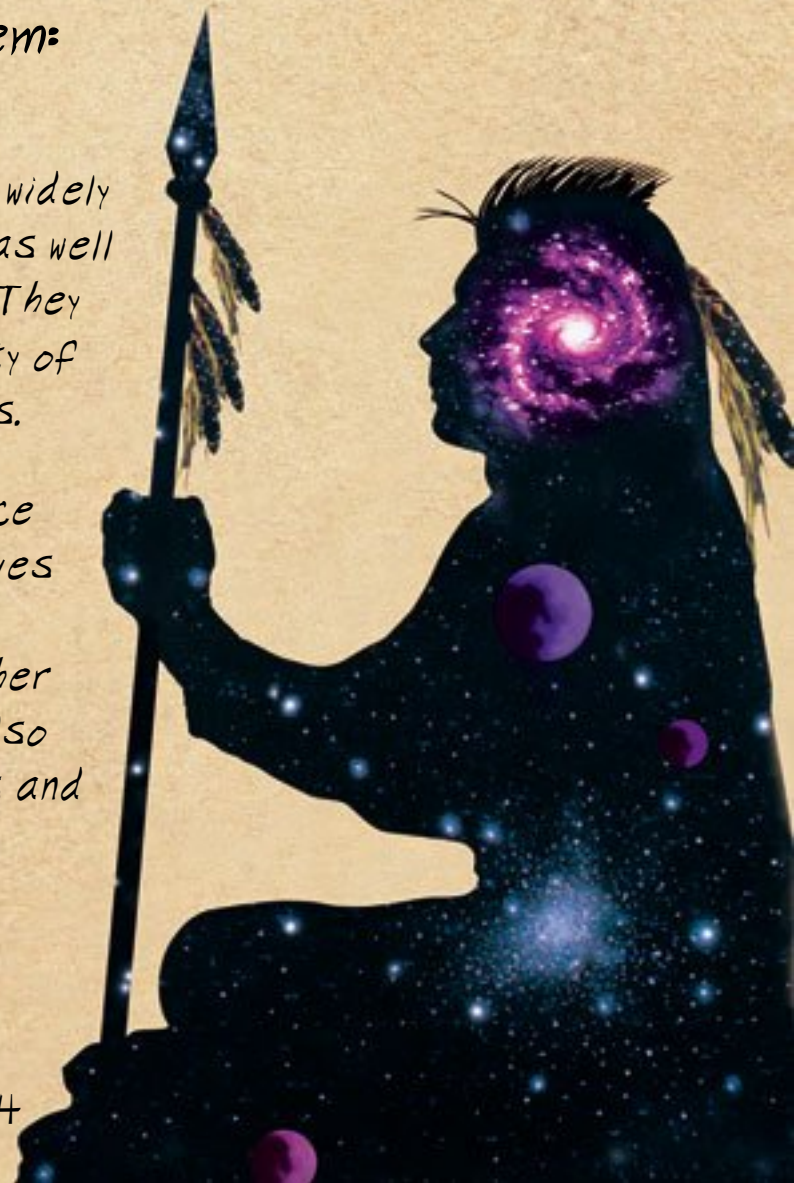
*Like your animal totem, you are a persistent and persevering person who shows patience in accomplishing a goal. You don't always opt for the most direct route in this but, in the figurative sense, you stalk and take different possibilities into consideration.*

*Only when you are really sure that you are making the right decision will you put it into action. Some would draw the conclusion from this that you were capricious and indecisive, however, they fail to see that this sort of approach is in keeping with your basic nature.*

## *Your Plant Totem: The Plantain*

*The healing power of this widely spread and modest plant was well known to the native Indians. They knew how to use it in a variety of ways to alleviate sicknesses.*

*For external use a poultice made from the plantain leaves was applied to cure inflammation, eczema or other skin diseases. This plant also served very well for injuries and insect bites.*





*The tea that was made from the plantain leaves had an effect on disorders in the areas of the stomach and the intestine, as it was able to rid the body of poison and could purify the blood. This plant also had a healing effect on illnesses related to the liver and the kidneys.*

*In yet another regard, your plant totem is of great significance for your further development: This established plantain, with its roots deep in the ground, indicates to you how important it is to build a good and secure foundation.*

*Only on condition that you have a sound basis as your starting point, will you be able to make your way towards high intellectual goals. Your inspirations and your strong imagination make it possible for you to broaden your horizons and reach unimagined of heights.*

*However, your intellectual talents will only be able to develop effectively if you, Heinrich, like the plantain, are well-grounded and are balanced and at peace within.*

## *Your Mineral Totem: The Turquoise*

*This transparent, precious*





stone, which ranges in color from a light blue to a deep green has played an important role in many Indian ceremonies and rituals.

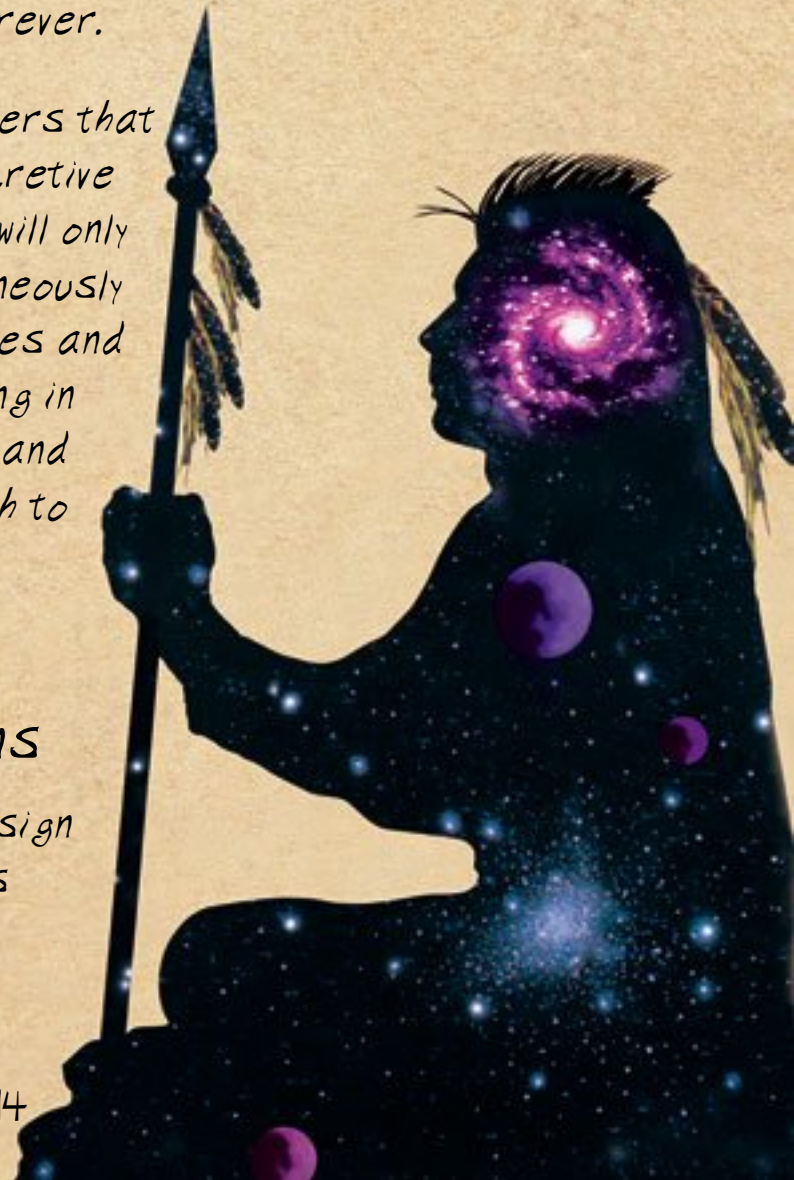
This is the reason that people say that the turquoise is able to protect its owner from dangers or attacks. On the other hand, it was thought to promise good luck and many Indian tribes therefore worked it into their bows.

In addition, the turquoise was mentioned in connection with the sky and its color. From this resulted the recognition that people whose mineral totem contains the turquoise are able to ascend to higher spiritual spheres, to push into areas which remain closed to others forever.

Heinrich, your inherent powers that can open up the way into secretive and magical fields for you will only be effective if you simultaneously keep your earthly experiences and knowledge and understanding in mind. You need this support and this attachment to the earth to stop you from slipping into mystical ideas.

## Good Combinations

People who are under the sign of the Moon of Great Winds





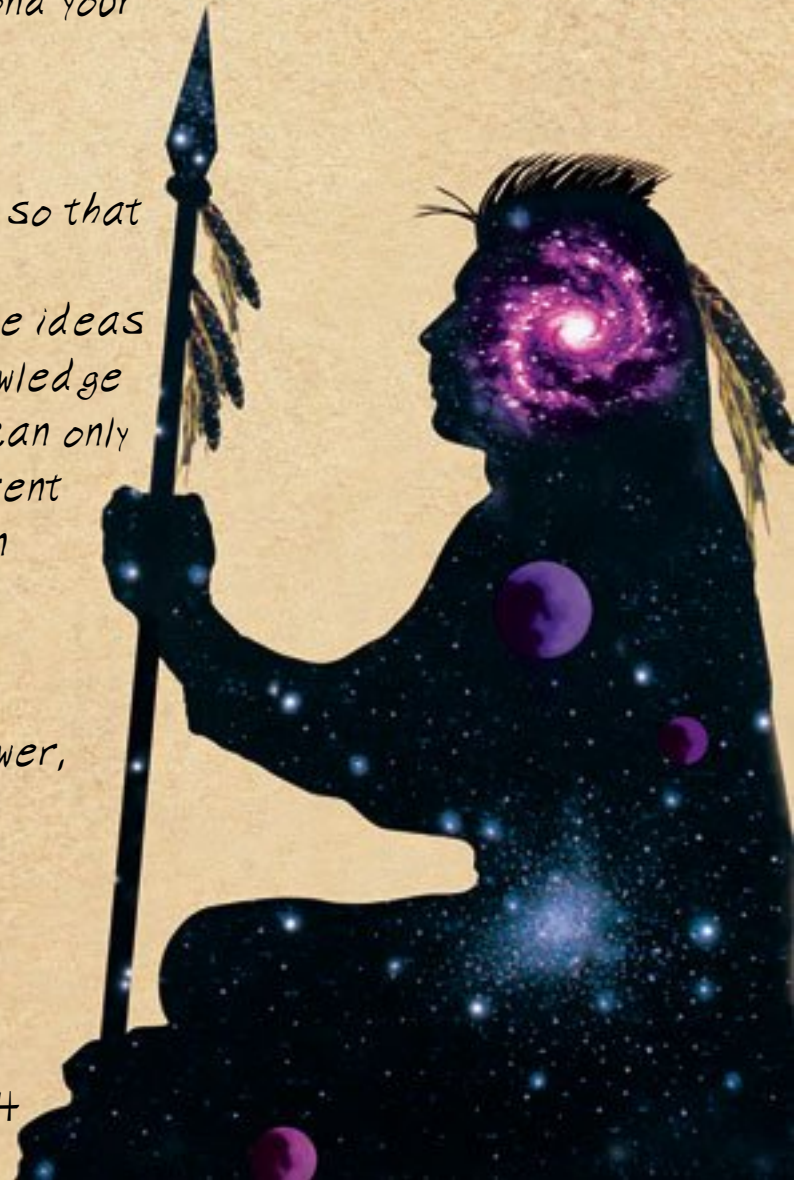
*highly value the closeness of those who belong to the animal totem of the woodpecker, the snake, the brown bear, the beaver and the snow goose.*

## *Your Cardinal Point: Waboose - The Northern Force*

*Those who are under the influence of the northern force have the valuable and very rare ability to venture into intellectual spheres which remain closed to many others. When you succeed in developing this natural ability and doing it justice, you will be able to reach unimagined of heights. You will gain experiences and knowledge which go far beyond your previous state of mind.*

*It will be your task to disseminate this knowledge so that your fellow man is given the opportunity to share in these ideas and to learn from them. Knowledge of true interrelationships can only aid in developing their inherent power when it doesn't remain hidden away or isn't kept secret.*

*Waboose, the northern power, symbolizes a renewal and a revival of the spirit and a*





purification of the body. It is in line with your destiny to establish a connection between the earthly forces and the higher spiritual planes.

This union is only possible if your roots go deep into the ground and you Heinrich, have found your inner equilibrium. Only then can the energies flow freely and ensure a broadening of your horizon.

It is very important for your further intellectual development that you build up a trusting and profound relationship with your environment. While you are a person who enjoys company, you try to keep your true feelings and intentions a secret from your fellow men.

You come across as being informal and receptive, but lacking the willingness to enter into a deeper relationship. You can only experience inner fulfillment if you really open up and nip all reservations and traces of suspicion in the bud.

## Your Element Clan: The Frog

The clan of the frog is equated with the element which first made life on earth





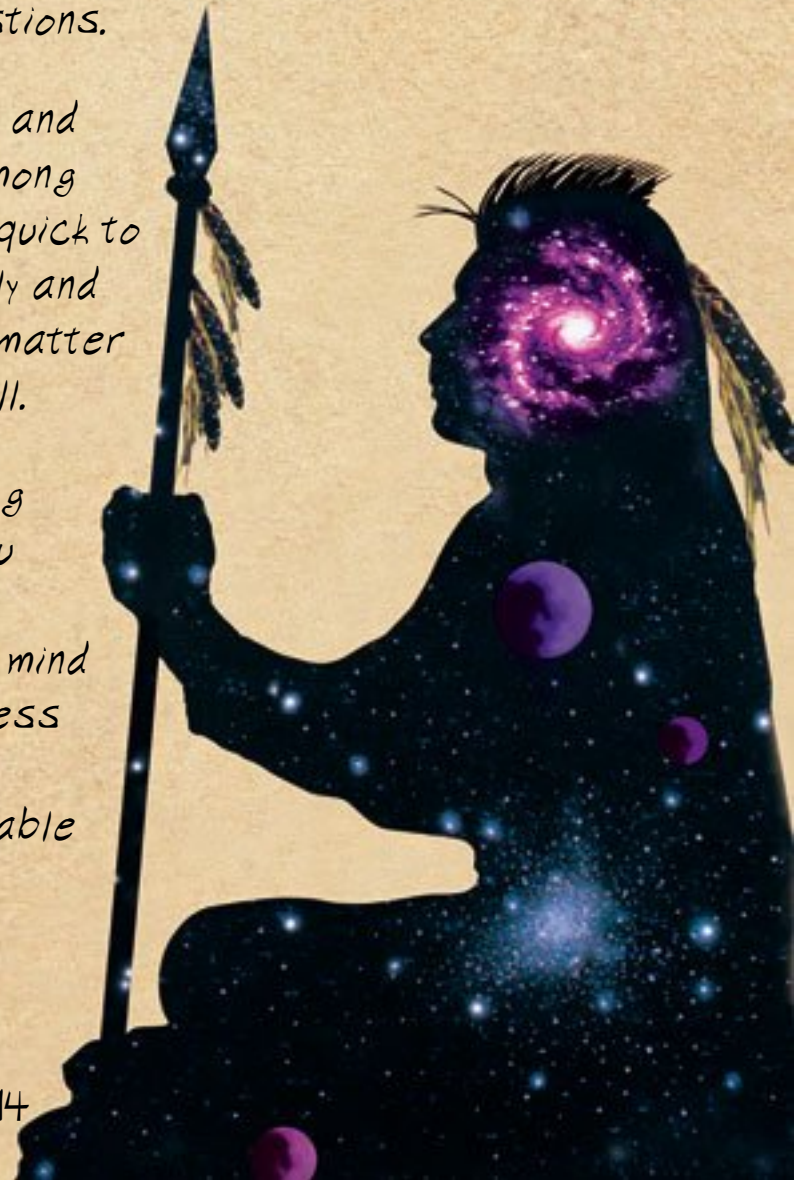
possible - water. It is both a supple and flowing element that can scarcely be held back in its movement and knows how to elegantly get around restrictions.

Accordingly, you will be a sensitive person who is good at putting yourself in the position of the person you are talking with. Heinrich, you are basically not indifferent about what is happening around you. When you feel that a fellow human being is in need, you sensitively and empathetically respond to their troubles to improve their circumstances.

Your creative ability and your imagination are always noteworthy - you are often the one who gets a project that has been bogged down, going again through original and unusual suggestions.

Your unconventional ideas and plans will strike sympathy among your fellow men, people are quick to realize that you are honestly and sincerely interested in the matter in hand and really on the ball.

Incidentally, it is in keeping with your disposition that you face alteration and reorganization with an open mind as there's nothing you like less than confining rules and regulations. You want to be able to move freely and without





*obligations and therefore aren't willing to let yourself be tied down to a single role and a single area of responsibility.*

*It will also be of prime importance for your further development that you are able to express your true feelings and sensitivities. It will have a negative effect on your inner equilibrium if you have to disguise or control them. You just need a chance to be able to casually express your rich emotional life.*

